

SUMMER HOME of the BLACK HILLS PASSION PLAY

Description of the stage viewed from left to right: THE CITY GATE; BETHANY, the home of Mary and Martha; PALACE OF THE ROMAN GOVERNOR, PILATE; CENTER STAGE (used for THE PROLOGUE—THE LAST SUPPER—COURT OF KING HEROD—THE SCOURGING—THE ASCENSION); THE TEMPLE; THE HIGH PRIEST COUNCIL, THE GARDEN OF GETHSEMANE; THE TOMB, THE ROAD TO GOLGATHA; MOUNT CALVARY.

The colorful LOOKOUT MOUNTAIN serves as a fitting background for the Stage. While the Theater is only a short walk from the city center of Spearfish, roads have been built to permit driving into the grounds where free parking space for more than one thousand cars is available.

FACTS CONCERNING THE BLACK HILLS PASSION PLAY

One of Europe's oldest productions, the Passion Play was presented for the first time on the American Stage in 1932 as the Luenen Passion Play. It became a permanent institution in the New World in 1939, when the company settled in the Black Hills of South Dakota. Here, the above Amphitheater was constructed and each year during the Summer Months the World's Greatest Tragedy is being re-enacted against a background of unparalleled beauty and realism. In 1952, a second Amphitheater was completed in Lake Wales, Florida, where the Play is presented each year during the Winter months.

Now widely acclaimed as the most outstanding production of its type, the Black Hills Passion Play reconstructs faithfully the dramatic events of the seven last days of the Life of Christ. Endowed with all the riches, splendor, and pageantry of the Orient, this great Play speaks eloquently of the love and fury of a people two thousand years ago; the Roman domination over Palestine; the devotion of the disciples and friends, and the supreme sacrifice of the Son of Man.

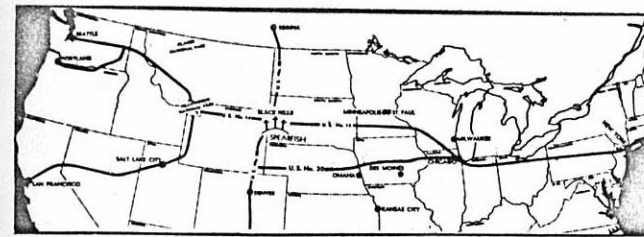
The stage setting is the realization of an ambitious dream on the part of Josef Meier.

To translate the setting into reality called for years of study and research of all phases pertaining to the historic events—the customs and attire of the people involved, Palestine and

Roman architecture, Jewish Laws and those imposed on them by their Roman conquerors. His intimate knowledge of all phases of stagecraft enabled him to arrange the series of settings in a manner which allows a smooth and logical unfolding of the Play. Under his direction and supervision, one of the most flexible lighting systems was assembled, which, operated by remote control, illuminates each scene with the quality and quantity of light called for, ranging from a beautiful moonlit night to early dawn, into the bright glare of high noon and the multicolor effect of a Palestine sunset.

Roman soldiers, mounted on proud Arabian horses, arrogantly ride through the teeming city street, forcing the populace into the path of a passing camel caravan. Pigeons escape from cages, as merchants and moneylenders are driven from the Temple. Through all this, with simplicity and purpose, moves the central figure of the drama on a mission which leads HIM from public acclaim to public condemnation, from the weary road to Golgatha, to the peace of the dark Tomb, into the glory of the Ascension.

All parts of the mammoth stage are in full view of every seat in the large Amphitheater and perfect acoustics carry the lines of the actors to the last row and beyond.



U. S. 14 or 85 provide good access to Spearfish, So. Dak. from all directions. Western Air Lines lands at Spearfish Airport daily on its east and west bound flights. Railroad facilities are supplemented by bus service directly into Spearfish, So. Dak.

SPEARFISH in the BLACK HILLS

BLACK HILLS . . . America's foremost vacation spot, is composed of beautiful pine-covered mountain ranges. Averaging a mile above sea level, it has the most delightful summer climate, particularly suited for out-door vacation life. Every turn in its wide, well-kept blacktop roads reveals new vistas of breathtaking beauty. Famous SPEARFISH CANYON, with its rushing trout stream; RUSHMORE MEMORIAL, Gutzon Borglum's unsurpassed monument to Democracy; THE NEEDLES; SYLVAN LAKE; DEVIL'S TOWER, one of nature's wonders; THE BADLANDS, with their fantastic formations. Inhabited by people who know and practice Western Hospitality, visitors can enjoy fully the excellent trout fishing, horseback riding, mountain climbing and the yearly Rodeos.



Ample accommodation is to be found in the many hotels, motor courts, and tourist homes. For room accommodation in Spearfish, write the SPEARFISH CHAMBER OF COMMERCE, Spearfish, South Dakota. Western Airline, the railroad, and busses will bring you to the Hills safely and economically if you prefer not to drive.

Tickets for the Black Hills Passion Play Are No Problem

1. Make your reservation in advance by using the TICKET ORDER BLANK on opposite page and mail with check or money order to BLACK HILLS PASSION PLAY BOX OFFICE, Spearfish, South Dakota.
2. Reservation by Phone or Wire will be held at Main Box Office until 7 p.m. of date for which reservation is made. After 7 p.m. all uncalled for tickets will be returned for general sale.
3. Purchase tickets directly at the Amphitheater Box Office until curtain time.

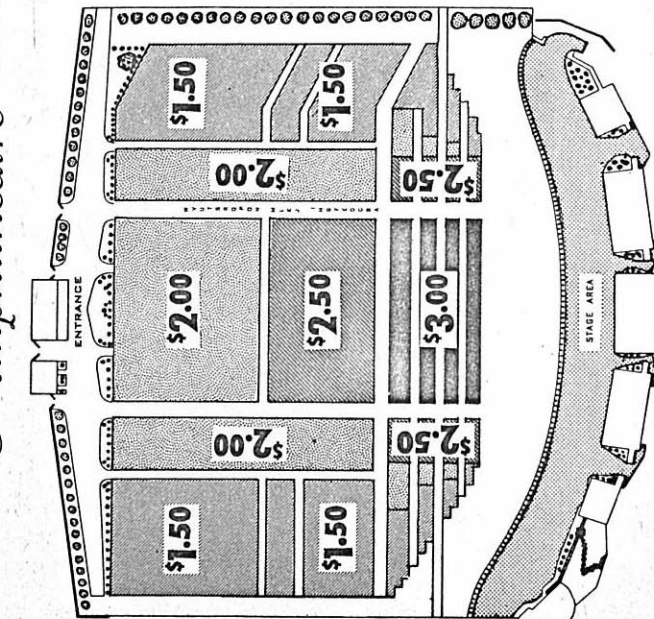
IMPORTANT NOTICE

Allow ample time in which to mail your tickets. If too late to mail your tickets to you, we will confirm order and hold at Main Box Office. We cannot make refunds unless tickets are received at Box Office for cancellation prior to 5 p.m. on performance date.

BLACK HILLS PASSION PLAY

Amphitheatre

SPEARFISH, SOUTH DAKOTA



World's Largest Stage Production

ORDER FOR TICKET RESERVATIONS

BLACK HILLS PASSION PLAY of America
Spearfish, South Dakota

Gentlemen:

Enclosed M. O. or Cheque in amount of \$ _____

to cover cost of _____ at \$ _____ (Each)

Performance wanted (Date) _____, 1960

Preferred location _____

NAME _____

ADDRESS _____

CITY _____ STATE _____

Do Not Use This Space

No. _____

Received Cheque, M.O. \$ _____

Assigned _____

IMPORTANT NOTICE: Enclose self-addressed stamped envelope if you wish your tickets mailed. Otherwise, if paid for, they will be held for you at Box Office. Make Check or Money Order Payable to Black Hills Passion Play Company.



Josef Meier

portrayer of the Christus, is proclaimed by critics here and abroad as the outstanding interpreter of this most difficult role. The verdict is "Masterful" when they write about his performance in the Black Hills Passion Play.

Born in Luenen, Germany, he became a citizen of the United States in 1938. Following many years of study and preparation he assumed the principal role in the production and has since given more than five thousand performances. The most sincere tribute that can be paid him is that his auditors are no longer spectators of a play but are conscious of being present at the actual happenings of the historic events.

Josef Meier is ably supported by a carefully selected cast. All principals of the production are professional members of the American Stage who have a record of many years of association with the Black Hills Passion Play. The entire ensemble consists of 250 players.

Highlights of the Twenty-two Scenes

of the Black Hills Passion Play are: The Triumphal Entry into Jerusalem—The Farewell at Bethany—The Last Supper—The Prayer in the Garden of Gethsemane—The Trials, Before the High Priest Council, Before Pilate, and Before King Herod—The Carrying of the Cross to Golgotha—The Crucifixion and Burial—Climaxing with the Glorious Ascension.

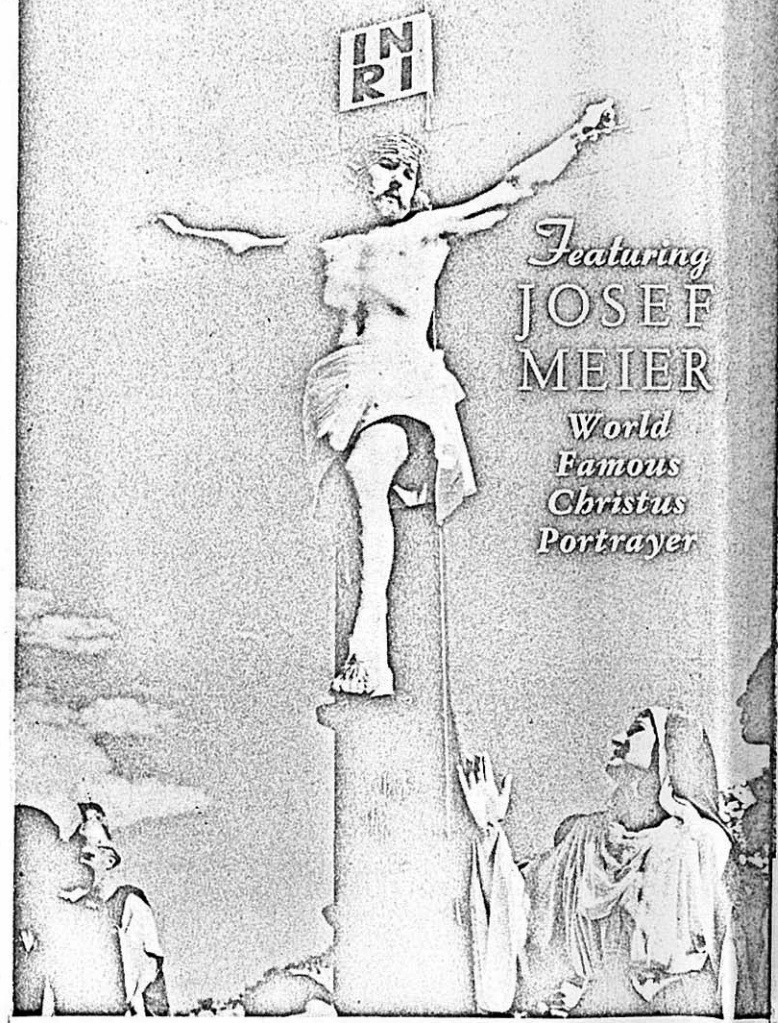
ADMISSION PRICES —(All Tax Included)

BOX SEAT (Center Section).....	\$3.00
Children under 12.....	\$1.50
BOX SEAT (Side Section).....	\$2.50
Children under 12.....	\$1.25
RESERVED SEAT.....	\$2.50
Children under 12.....	\$1.25
RESERVED SEAT.....	\$2.00
Children under 12.....	\$1.00
UNRESERVED SEAT, Adult.....	\$1.50
Children under 12.....	\$.75

For Advance Reservation Use Ticket Coupon on other side.

SUMMER SEASON-1960

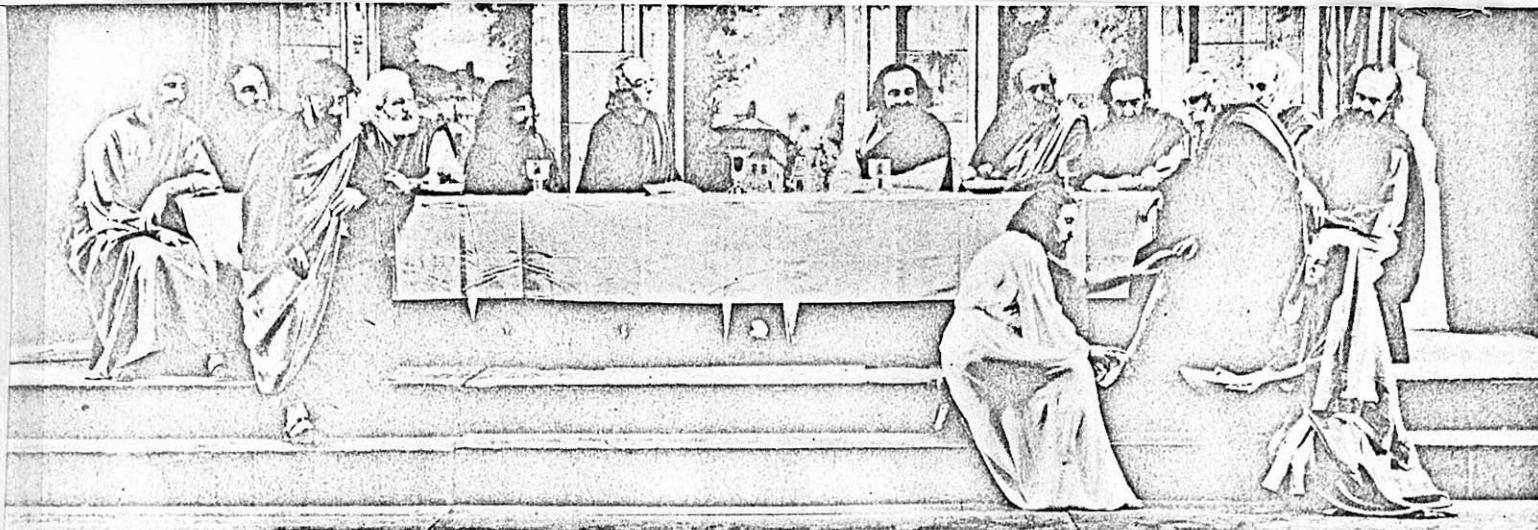
Black Hills Passion Play



SPEARFISH, SOUTH DAKOTA

OPENING PERFORMANCE, SUNDAY, JUNE 12, 1960
 EVERY SUNDAY, TUESDAY, THURSDAY AT 8:00 P.M.
 FINAL PERFORMANCE, SUNDAY, SEPTEMBER 3, 1960

For information and Reservation, write to
 BLACK HILLS PASSION PLAY OFFICE
 Spearfish, South Dakota, or Telephone No. 400



The Last Supper

Praised by Press • Acclaimed by Clergy • Endorsed by Educators • Lauded by Laymen

"Black Hills Passion Play, a modern miracle."
 Robert Casey, Chicago Daily News
 "Josef Meier as the Christus moves gently through the many brilliant episodes with grace and spiritual appeal."
 Charles Collins, Chicago Tribune

"Audience hushed and intent in spell of Passion Play."
 Harry Hobbs, Kansas City Star

"Enthralled audiences held spellbound by Black Hills Passion Players."
 Harry Martin, The Commercial Appeal, Memphis

"I am well acquainted with the success which this play has enjoyed and the very hearty response which has been given to it by Protestant Churches."
 E. C. Fahnham, Executive Secretary Church Federation of Los Angeles, Calif.

"Mr. Meier achieves commanding power in the greatest and most difficult role an actor can undertake."
 C. S., Times-Picayune, New Orleans, La.

"Magnificent in its concept, spiritually moving in its presentation, vibrant in color and sound is the Passion Play of the Black Hills."
 Conrad Frederick Smith, The Charlotte Observer, Charlotte, N. C.

"The solid success of the Black Hills Passion Play makes it appear that the United States has acquired its own Oberammergau."
 Time Magazine

"The story of this dramatization of a miracle is almost a miracle in itself."
 Paul Friggins, Readers Digest

"Black Hills Passion Play is certainly to be highly commended for the stirring of the emotions truly religious and salutary."
 J. D. Rumel, Archbishop of New Orleans, New Orleans, La.

"The version used in this play has been done so artistically and effectively that whether one is a Roman Catholic, a Protestant or a Jew, no controversial aspect is presented."
 Preston Bradley, The Peoples Church, Chicago.

"Under skillful lighting, the skillful drama unfolded on the two-block long set."
 News Week Magazine

"The most impressive play of this or any other season."
 Linton Martin, Philadelphia Inquirer



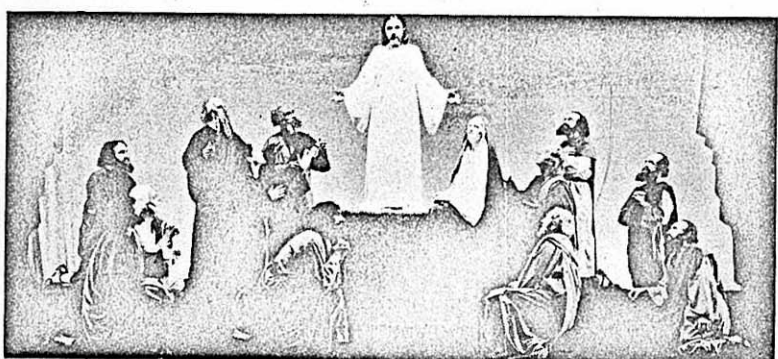
THE BETHANY SCENE



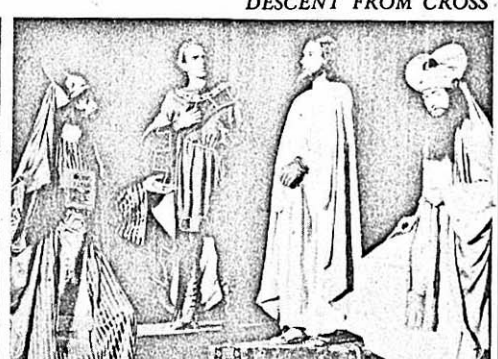
JUDAS KISS



CHRIST BEFORE THE HIGH PRIEST COUNCIL



THE ASCENSION



CHRIST BEFORE PILATE



COURT OF HEROD



DESCENT FROM CROSS